

RECHERCHE



nature
International journal of science

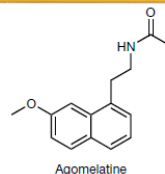
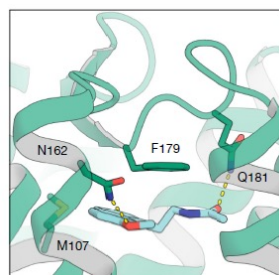
doi: 10.1038/s41586-019-1209-0

doi: 10.1038/s41586-019-1141-3

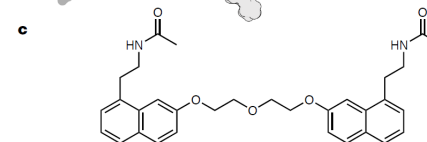
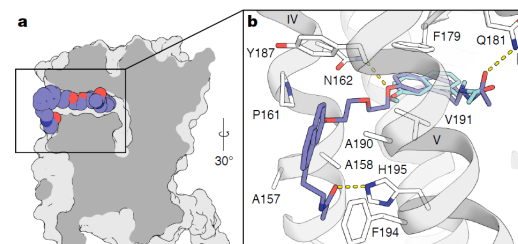
Melatonergic ligands allowed the first RX structures of MT₁ and MT₂ receptors



The Long Awaited First Crystal Structure of MT₁&MT₂ Receptors...



...co-crystallized with a drug developed in our lab in collaboration with Servier®...



...reveals a totally new binding mode with our new developed MT₁ selective bitopic ligands!

Structural basis of ligand recognition at the human MTR₁ melatonin receptor.

Stauch B, Johansson LC, McCorvy JD, Patel N, Han GW, Huang XP, Gati C, Batyuk A, Slocum ST, Ishchenko A, Brehm W, White TA, Michaelian N, Madsen C, Zhu L, Grant TD, Grandner JM, Shiriaeva A, Olsen RHJ, Tribo AR, **Yous S**, Stevens RC, Weierstall U, Katritch V, Roth BL, Liu W, Cherezov V.

Nature **569**, 284-288 (2019)

XFEL structures of the human MT₂ melatonin receptor reveal the basis of subtype selectivity

Johansson LC, Stauch B, McCorvy JD, Han GW, Patel N, Huang XP, Batyuk A, Gati C, Slocum ST, Li C, Grandner JM, Hao S, Olsen RHJ, Tribo AR, Zaare S, Zhu L, Zatsopin NA, Weierstall U, **Yous S**, Stevens RC, Liu W, Roth BL, Katritch V, Cherezov V.

Nature **569**, 289-292 (2019)