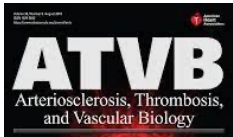


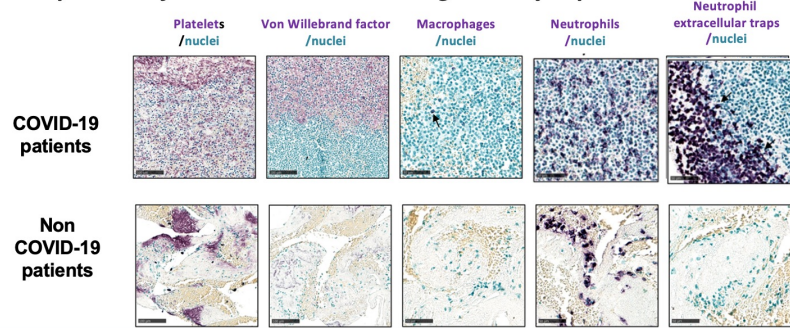
# RECHERCHE



May 2021 5;41(5):1760-1773. doi: 10.1161/ATVBAHA.120.315595.

## Vascular endothelial damage in the pathogenesis of organ injury in severe COVID-19

Composition of thrombi collected in living critically ill patients



- Association of endotheliopathy and dysregulated immune response with respiratory and multiorgan failure, liver injury and death in severe COVID-19 patients
- Accumulation of von Willebrand factor, neutrophils and neutrophil extracellular traps in thrombi from severe COVID-19 patients

## Major contribution of endotheliopathy and thromboinflammation to COVID-19 pathogenesis

**Annabelle Dupont<sup>1</sup>, Antoine Rauch<sup>1</sup>, Senna Staessens<sup>1</sup>, Mouhamed Moussa<sup>1</sup>, Mickael Rosa<sup>1</sup>, Delphine Corseaux<sup>1</sup>, Emmanuelle Jeanpierre<sup>1</sup>,** Julien Goutay<sup>2</sup>, Morgan Caplan<sup>2</sup>, Pauline Varlet<sup>3</sup>, Guillaume Lefevre<sup>3</sup>, **Fanny Lassalle<sup>1</sup>**, Anne Bauters<sup>4</sup>, Karine Faure<sup>5</sup>, Marc Lambert<sup>6</sup>, Alain Duhamel<sup>7</sup>, Julien Labreuche<sup>7</sup>, Delphine Garrigue<sup>8</sup>, Simon F De Meyer<sup>9</sup>, **Bart Staels<sup>1</sup>, Flavien Vincent<sup>1</sup>**, Natacha Rousse<sup>10</sup>, Eric Kipnis<sup>11</sup>, Peter Lenting<sup>12</sup>, Julien Poissy<sup>13</sup>, **Sophie Susen<sup>1</sup>**, and the Lille Covid Research Network (LICORNE) <sup>1</sup>Univ. Lille, Inserm, CHU Lille, Institut Pasteur de Lille, U1011-EGID <sup>2</sup>CHU Lille, Intensive Care Department, Pôle de Réanimation <sup>3</sup>Univ. Lille, Inserm, CHU Lille, U1286 - INFINITE - Institute for Translational Research in Inflammation <sup>4</sup>CHU Lille, Institut d'Hématologie-Transfusion <sup>5</sup>Univ. Lille, Inserm, CHU Lille, Institut Pasteur de Lille, UMR1019-CIIL <sup>6</sup>Univ. Lille, Inserm, CHU Lille, INSERM U 1167, Institut Pasteur <sup>7</sup>Univ. Lille, CHU Lille, ULR 2694 - METRICS: Évaluation des technologies de santé et des pratiques médicales <sup>8</sup>CHU Lille, Surgical Critical Care, Department of Anesthesiology and Critical Care <sup>9</sup>Laboratory for Thrombosis Research, KU Leuven Campus Kulak Kortrijk, Kortrijk, Belgium <sup>10</sup>CHU Lille, Service de Chirurgie Cardiaque <sup>11</sup>Univ. Lille, CNRS, Inserm, CHU Lille, Institut Pasteur de Lille, U1019 - UMR 9017 - CIIL - Center for Infection and Immunity of Lille <sup>12</sup>Inserm, UMR\_1176, Université Paris-Saclay, Le Kremlin-Bicêtre, France, <sup>13</sup>Univ. Lille, Inserm U1285, CHU Lille, CNRS, UMR 8576 - UGSF - Unité de Glycobiologie Structurale et Fonctionnelle