

# RECHERCHE

EUROPEAN JOURNAL OF  
**MEDICINAL  
CHEMISTRY**

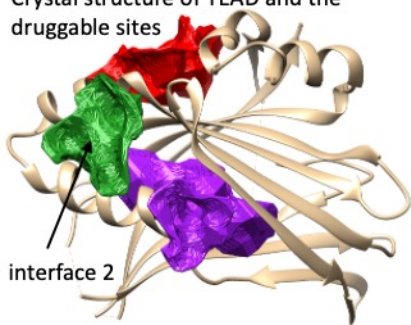
<https://doi: 10.1016/j.ejmech.2021.113835>



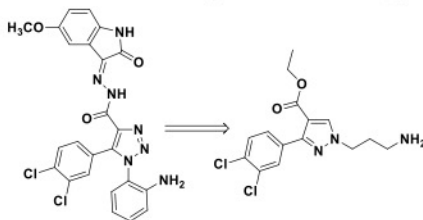
Lille  
Neuroscience  
& Cognition

## Discovery of a cryptic site at the interface 2 of tead - towards a new family of yap/taz-tead inhibitors

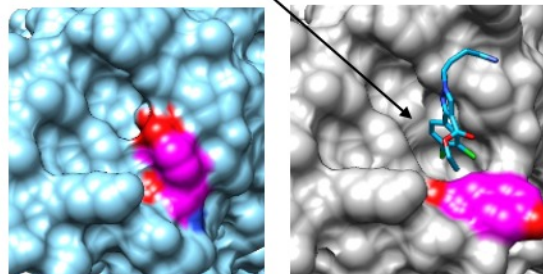
Crystal structure of TEAD and the druggable sites



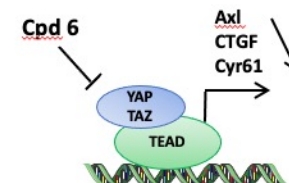
Structures of previous hit leading to our best interface 2 ligand by a deconstruction/optimization strategy



Cryptic site at the interface 2



Inhibition of target genes on breast cancer cell lines



Cell proliferation inhibition  $IC_{50} \sim 5 \mu M$

**Manon Sturbaut, & Fabrice Bailly, & Mathilde Coevoet, & Pasquale Sileo, & Martine Pugnère, § Maxime Liberelle, & Romain Magnez, # Xavier Thuru, # Marie-Christine Chartier-Harlin, & Patricia Melnyk, & Muriel Gelin, † Frédéric Allemand, † Jean-François Guichou, \*\* Philippe Cotelle<sup>§,†,\*</sup>**  
§ Univ Lille, INSERM, CHU Lille, UMR-S 1172, Lille Ncog, F-59000, Lille, France; § IRCM INSERM U1194 – ICM- UM 208 rue des Apothicaires, F-34298 Montpellier Cedex 5, France; # Univ. Lille, CNRS, Inserm, CHU Lille, IRCL, UMR9020 – UMR1277 – Canther, F-59000 Lille, France; † CBS, CNRS, INSERM, Univ Montpellier, Montpellier, France; ‡ ENSCL-Centrale Lille, CS 90108, F-59652 Villeneuve d'Ascq Cedex, France